

Hat Box

BY ANDOVER FABRICS



Lacy Days Quilt designed
by: **Lucy Fazely**

Quilt Size: **50½" x 72"**

andoverfabrics.com

About Hat Box

Romantic florals and feminine lace prints harken back to turn of the century fashion when stylish women of the day used hat boxes to store their stylish chapeaux.

andover

•
•
• makower.uk
•

Free Pattern Download Available

1384 Broadway New York, NY 10018
Tel. (800) 223-5678 • andoverfabrics.com



9273-B 2 yds



9274-B



9275-B 1¼ yds



9273-P 3½ yds (backing)



9274-P ¾ yd



9275-P 1¼ yds



9277-B



9277-G Fat ¼ yd



9277-L



9277-P



9279-B



9279-E Fat ¼ yd



9279-G Fat ¼ yd



9279-N



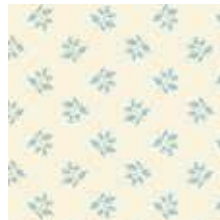
9278-G Fat ¼ yd



9278-L



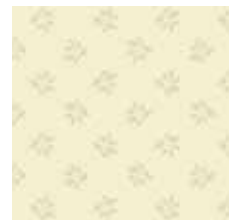
9278-P Fat ¼ yd



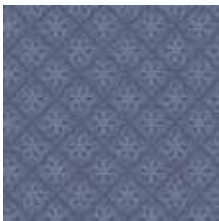
9280-B



9280-E ⅛ yd



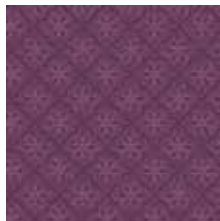
9280-L Fat ¼ yd



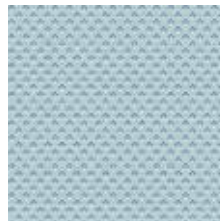
9281-B



9281-N



9281-P ⅞ yd
(includes binding)



9282-B



9282-E



9282-G

FABRIC	5 KITS	10 KITS	20 KITS
9281-P	1	1	2
FROM EACH	1	2	3
	9273-B	9275-B	9275-P
FROM EACH	1	1	1
	9274-P	9277-G	9278-G
	9279-E	9279-G	9280-E
		9280-L	

BACKING

9273-P	2	3	5
--------	---	---	---

Yardage needed for backing:
3½ YDS per kit

Bolts needed to cut project kits.
15 yds = 1 bolt

Fabrics shown are 25% of actual size.
Fabrics used in quilt pattern are shown
in black.

Hat Box
BY ANDOVER FABRICS

andover

makower uk